

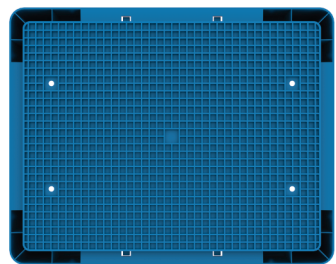
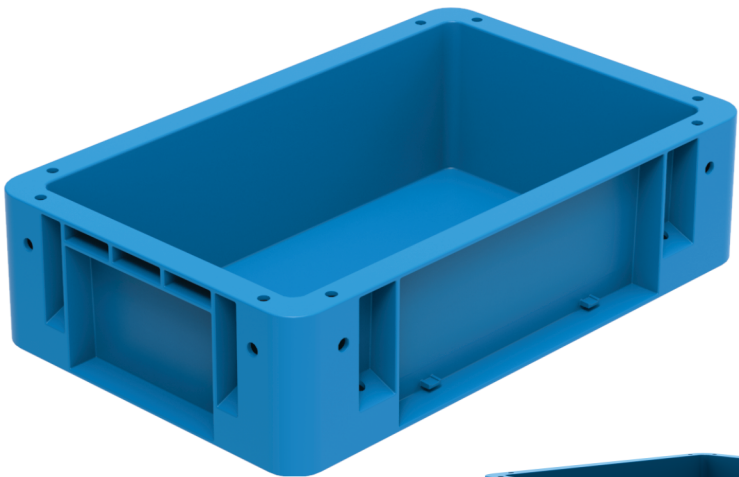
EURO FORTE 3210



Special boxes for **AUTOMATED SYSTEMS**

CHARACTERISTICS

- Facilitates automated loading/unloading of content
- Has a place for label holders
- Reinforced bottom
- Enables engraving of logo or company name
- Reinforced double column
- Handles for robot



REINFORCED BOTTOM



EURO FORTE Model	Nominal Dimensions length x width x height (in)	External Dimensions length x width x height (in)	Internal Dimensions of the top length x width (in)	Internal Dimensions of the base length x width (in)	Useful internal height dimensions (in)	Weight (lbs)	Cap. (ft ³)	Material
3210	11,81x27,87x3,94	14,96x9,45x4,13	13,31x8,50	13,07x7,56	3,50	1,54	0,21	PP

- ADDITIONAL INFORMATION**
- Available in white for the Food Line
 - Check color availability
 - Available in conductive material
 - Resistant to impact, oil and temperature variations