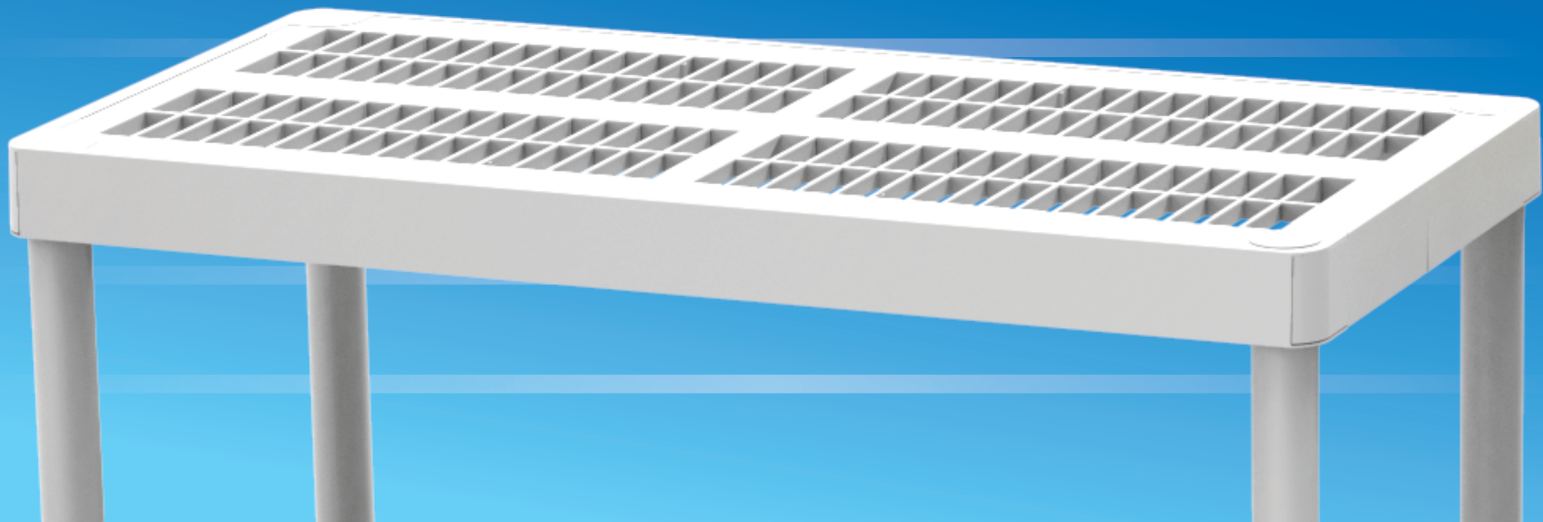


LINE

HÉRCULES SHELVING UNIT

resistent - sustainable - inteligent



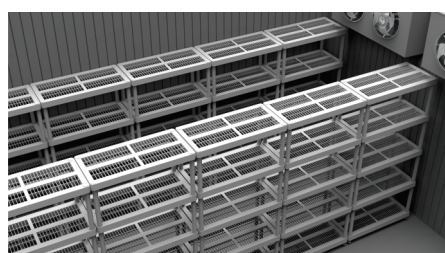
Developed to facilitate your business.

EXTREMELY RESISTANT

The Hercules Shelving Unit supports up to 70kg per shelf. Made of thick polypropylene for greater durability, not having problems with oxidation and wear.

HYGIENIC

Easy to clean, with a hollow grid that improves air circulation and the foot height let your products away from the floor.



EASY ASSEMBLY

Tools are not needed for assembly



MORE VERSATILITY AND QUALITY

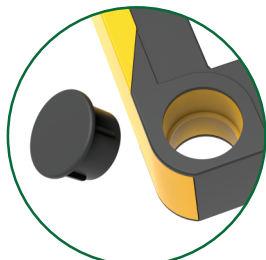
It has colored sides, which are ideal for organizing with the Kanban method, improving process management or simply to match with your decorations.



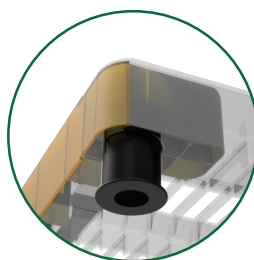
MODELS	NOMINAL DIMENSIONS length x width x height (in)	WEIGHT (lbs)	CAPACITY (lbs)	MATERIAL
3 SHELVES	35,83x17,72x38,39	15	463	PP
4 SHELVES	35,83x17,72x55,51	19	617	PP
5 SHELVES	35,83x17,72x72,83	26	772	PP



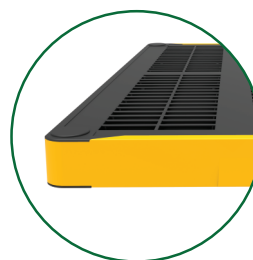
ROBUST
Up to 70kg per shelf



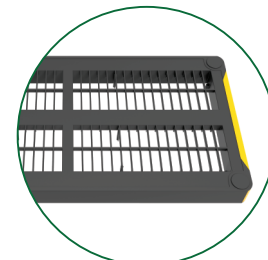
PROTECTION COVER
Prevents the accumulation of dirt and the entry of insects



SUPPORT FEET
Keeps products off the floor



COLORFUL SIDES
Customized



VENTILATED
Better air circulation and better hygiene