

LINE  
**SMART TRASH CANS**

*resistent - sustainable - inteligent*



## Developed to facilitate your business.

### **MORE VERSATILITY AND QUALITY**

The perfect combination of design, robustness and security. The Smart Trash Cans are equipped with a silent lid that also cushions the impact when closing, a safety lock and a modern and compact design. Available in 3 sizes to suit all major needs.

### **SUSTAINABLE MATERIAL**

Made with recycled materials that contribute to the reduction of solid waste improperly disposed of in the environment and the reduction of CO2 emissions.

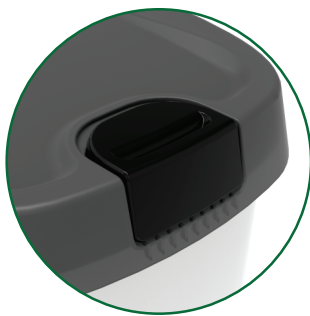


Resistant to impact, oil and temperature variations.  
No metal parts in the composition.

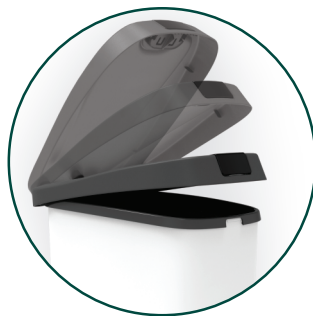
**THE PERFECT COMBINATION OF INNOVATIVE DESIGN, TECHNOLOGY, SUSTAINABILITY AND SAFETY.**



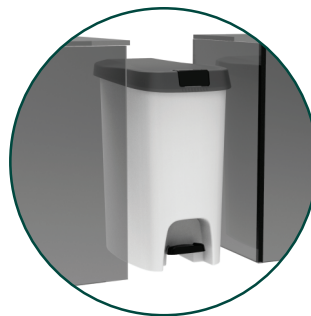
<b>SIZES</b>	<b>NOMINAL DIMENSIONS</b> length x width x height (in)	<b>WEIGHT (lbs)</b>	<b>CAPACITY (ft<sup>3</sup>)</b>	<b>MATERIAL</b>
0,57 ft <sup>3</sup>	12,20x8,27x17,72	2,2	0,57	PP and POM STEEL
0,88 ft <sup>3</sup>	16,14x11,42x20,08	5,5	0,88	PP and POM STEEL
1,77 ft <sup>3</sup>	19,29x12,20x24,41	6,6	1,77	PP and POM STEEL



**SECURITY LOCK**  
Smart mechanism to protect small accidents.



**SILENT COVER**  
Silent closing movement



**SLIM DESIGN**  
Fit anywhere



**CUSTOM COLORS**